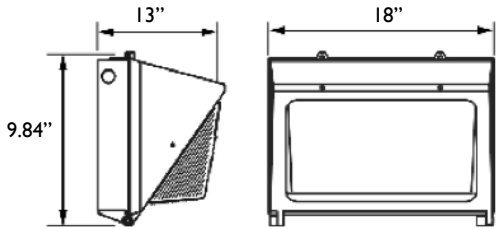


WALLPACK.Y
 All products feature Noribachi's exclusive Bespoke Engineered and Specifically Tailored (BEST) manufacturing methodology.

CATALOG #:	TYPE:
PROJECT:	
COMMENTS:	DATE:
PREPARED BY:	

PRODUCT



Product Information

The Wallpack.Y is a shallow, low maintenance LED lighting fixture.

This LED lighting fixture features heavy-duty die-cast aluminum housing with a high impact and heat resistant borosilicate glass lens.

Applications: Recreational Facilities, Schools, Walkways and a variety of outdoor lighting applications.

Performance Summary

Lumens Range: 8,862 lm - 17,723 lm
 Lumens Per Watt (Typical): 141
 Light Engine: L70 Rated Lifetime of 100,000+ hours.
 CRI: Minimum 70 CRI. Custom CRI available upon request.
 CCT (Typical): 3000K, 4000K, 5700K
 Manufactured in the U.S. with parts from U.S. and imported.

Fixture Information

Housing: Dark Bronze / Custom
 Lens: High Impact / Heat Resistant Borosilicate Glass
 Mounting: Surface
 Diffusion: Glass Optical

Specifications*

CSA Rating: Wet Locations
 Length: 18"
 Width: 13"
 Height: 9.84"
 Weight: 15.85 lbs

*Specifications are subject to change without notice

Electrical System Characteristics / Data

Standard AC input: 120-277 VAC
 EMI filter: 47CFR, part 2, part 15
 Power factor: > 0.9
 Total harmonic distortion: < 20%
 Surge protection: IEC/EN 61000-4-5 EMC test standard

Electrical characteristics and performance data verified by Nationally Recognized Testing Labs (NRTL). For full reports and results, visit www.noribachi.com/reports.

Ordering Information Sample Catalog Number: HEX-084-B-WW-MT-WPY						
LIGHT ENGINE	DRIVE CURRENT	COLOR TEMPERATURE	VOLTAGE	FIXTURE CODE	OPTIONAL UPGRADES	OPTIONAL BEAM SPREAD
HEX-042 LIN-054 HEX-063 LIN-072 HEX-084	B B B B B	CW – COOL WHITE (5700K TYPICAL) NW – NEUTRAL WHITE (4000K TYPICAL) WW – WARM WHITE (3000K TYPICAL)	MT	WPY-WALLPACK.Y	PC1 – 120V BUTTON PHOTOCELL PC2 – 208V-277V BUTTON PHOTOCELL OS – OCCUPANCY SENSOR OOS – OUTDOOR OCCUPANCY SENSOR EM – EMERGENCY BATTERY BACKUP, 5W, 600 LUMENS, 90 MINUTES* EMC – EMERGENCY BATTERY BACKUP, COLD, 23W, 2000 LUMENS, 90 MINUTES* HV1 – 480V UP TO 150V COL [RAL] – CUSTOM FIXTURE COLOR COAT – MARINE GRADE FIXTURE COATING EPOXY – EPOXY COATING SGR1 – 100 -277V SURGE PROTECTOR SGR2 – 480V SURGE PROTECTOR 010V – 1-10V DIMMING FUNCTIONALITY STEP – STEP DIMMING FUNCTIONALITY *MUST PROVIDE EXACT VOLTAGE REQUIREMENTS	80D – OPTIONAL 80° BEAM SPREAD

Warranty: Five-Year Limited Warranty. Optional 10-Year Manufacturer's Warranty Available. Full Warranty Terms Available At www.noribachi.com/products/warranty

WHEN APPROVED, THE SPECIFICATIONS OUTLINED IN THIS SPEC SHEET SHALL BECOME THE SPECIFICATION FOR THE MATERIAL TO BE DELIVERED BY NORIBACHI ON THE CITED PROJECT. AN AMENDED SPEC SHEET CAN BE PROVIDED BUT ONLY AFTER WRITTEN APPROVAL BY THE CUSTOMER IS RECEIVED. THIS DOCUMENT IS THE PROPERTY OF NORIBACHI AND CAN ONLY BE USED IN CONNECTION WITH MATERIALS FURNISHED BY NORIBACHI. ©2015



WALLPACK.Y
 All products feature Noribachi's exclusive Bespoke Engineered and Specifically Tailored (BEST) manufacturing methodology.

CATALOG #:	TYPE:
PROJECT:	
COMMENTS:	DATE:
PREPARED BY:	

ELECTRICAL

Construction
 Heavy-duty die-cast aluminum housing with a high impact and heat resistant borosilicate glass.

Optics
 High brightness, high efficiency LEDs. Color temperature options include Cool White (5700K typical), Neutral White (4000K typical) Warm White (3000K typical) with minimum 70 CRI. Custom RGBV colors available. 120° beam angle standard. Optional 80° beam angle available.

Controls
 Control options include Occupancy Sensor (OS) and Outdoor Occupancy Sensor (OOS). Emergency Battery Backup (EM) or Emergency Battery Backup, Cold (EMC). 120V Button Photocell (PC1) and 208V-277V Button Photocell (PC2). 480V up to 150W light engine (HVI). 100-722V (SGR1) and 480V (SGR2) Surge Protectors. 0-10V (010V) and Step (STEP) Dimming functionality.

Mounting
 Surface mounting available.

Driver
 Available in B drive current (525 mA). Highly reliable. Suitable for dry, damp and wet locations. Compliant to worldwide safety regulations for lighting.

Testing Compliance
 UL 1598 Issued: 2008/09/17 Ed:3 Rev:2012/10/17 UL Standard for Safety Luminaires CSA C22.2#250.0 Issued: 2008/09/17 Ed:3 Luminaires; General Instruction No.1 2010/01/11, General Instruction No. 2 2012/10/17.

Electrical System
 Surge protection meets 10KV/5KA per ANSI/IEEE62.41. Driver meets maximum harmonic distortion (THD) of 20% and is ROHS compliant. Power Factor = > 0.9.

Ambient Temperature
 -40°C to +65°C (-40°F to + 149°F).

Electrical Load					
LIGHT ENGINE	DRIVE	DRIVE CURRENT (AMPS@120V)	DRIVE CURRENT (AMPS@277V)	DRIVE CURRENT (AMPS@480V)	SYSTEM POWER* (WATTS)
HEX-042	B	0.53	0.23	0.13	63.02
LIN-054	B	0.68	0.29	0.17	81.11
HEX-063	B	0.79	0.34	0.20	94.70
LIN-072	B	0.90	0.39	0.23	108.30
HEX-084	B	1.05	0.46	0.26	126.48
*Ideal Wattage					

Operating Characteristics (Typical @5700K CCT)					
LIGHT ENGINE	DRIVE	LUMENS (T5)	INPUT POWER (WATTS)	LUMENS PER WATT	REPLACES
HEX-042	B	8,862	63.02	140.62	125-300W
LIN-054	B	11,394	81.11	140.48	180-360W
HEX-063	B	13,293	94.70	140.37	200-400W
LIN-072	B	15,191	108.30	140.27	225-435W
HEX-084	B	17,723	126.48	140.13	300-525W

Manufacturing
 Manufactured in beautiful Harbor City, CA. ARRA Compliant. NAFTA Compliant. Test and burn-in of 100% of all luminaires before shipment. No less than 8-years experience in manufacturing LED-based products.

Note
 Specifications subject to change without notice. Actual performance may differ as a result of end-user environment application. Actual wattage may differ by +/- 8%.

WHEN APPROVED, THE SPECIFICATIONS OUTLINED IN THIS SPEC SHEET SHALL BECOME THE SPECIFICATION FOR THE MATERIAL TO BE DELIVERED BY NORIBACHI ON THE CITED PROJECT. AN AMENDED SPEC SHEET CAN BE PROVIDED BUT ONLY AFTER WRITTEN APPROVAL BY THE CUSTOMER IS RECEIVED. THIS DOCUMENT IS THE PROPERTY OF NORIBACHI AND CAN ONLY BE USED IN CONNECTION WITH MATERIALS FURNISHED BY NORIBACHI. ©2015



WALLPACK.Y
 All products feature Noribachi's exclusive Bespoke Engineered and Specifically Tailored (BEST) manufacturing methodology.

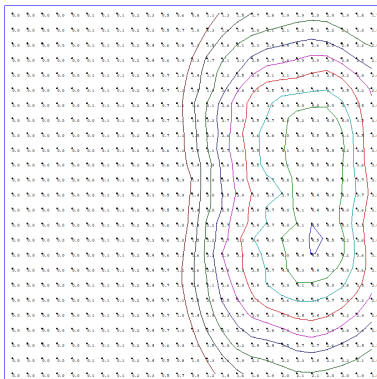
CATALOG #:	TYPE:
PROJECT:	
COMMENTS:	DATE:
PREPARED BY:	

PERFORMANCE / DISTRIBUTION

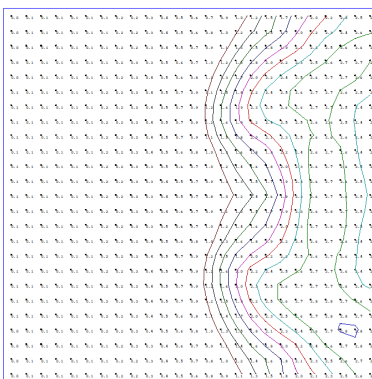
Power And Lumens By Light Engine							
DISTRIBUTION							
LIGHT ENGINE	DRIVE	CCT	T1 (LUMENS)	T2 (LUMENS)	T3 (LUMENS)	T4 (LUMENS)	T5 (LUMENS)
HEX-042	B	5700	N/A	N/A	8,419	7,976	8,862
LIN-054	B	5700	N/A	N/A	10,824	10,254	11,394
HEX-063	B	5700	N/A	N/A	12,628	11,963	13,293
LIN-072	B	5700	N/A	N/A	14,432	13,672	15,191
HEX-084	B	5700	N/A	N/A	16,837	15,951	17,723

**Type Distribution
 HEX-084**

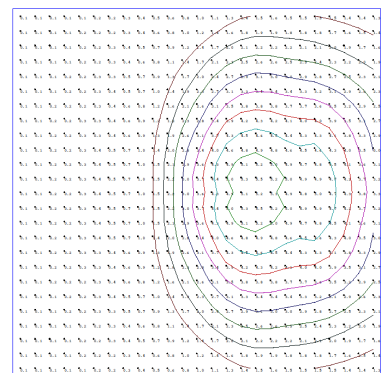
T-3



T-4



T-5



Distribution

- 120° Standard Beam Spread.
- 80° Optional Beam Spread Available.
- Other Light Engine Type Distribution Available Upon Request.

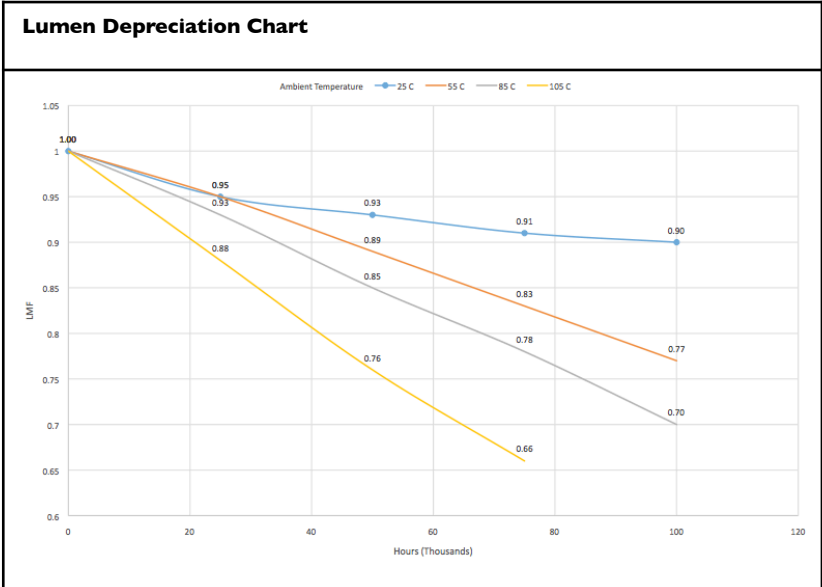
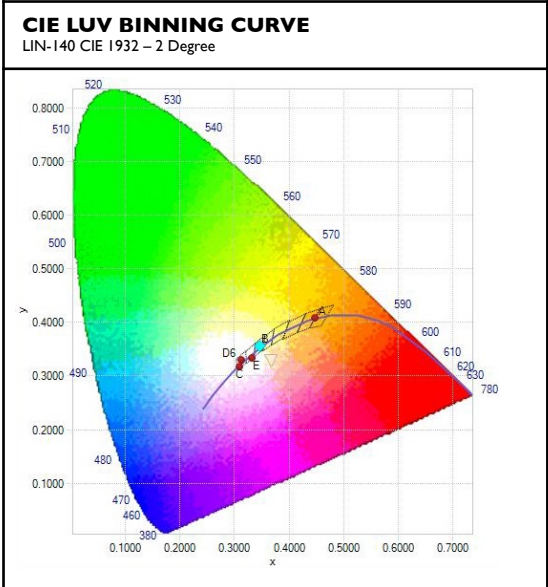
WHEN APPROVED, THE SPECIFICATIONS OUTLINED IN THIS SPEC SHEET SHALL BECOME THE SPECIFICATION FOR THE MATERIAL TO BE DELIVERED BY NORIBACHI ON THE CITED PROJECT. AN AMENDED SPEC SHEET CAN BE PROVIDED BUT ONLY AFTER WRITTEN APPROVAL BY THE CUSTOMER IS RECEIVED. THIS DOCUMENT IS THE PROPERTY OF NORIBACHI AND CAN ONLY BE USED IN CONNECTION WITH MATERIALS FURNISHED BY NORIBACHI. ©2015



WALLPACK.Y
 All products feature Noribachi's exclusive Bespoke Engineered and Specifically Tailored (BEST) manufacturing methodology.

CATALOG #:	TYPE:
PROJECT:	
COMMENTS:	DATE:
PREPARED BY:	

PERFORMANCE / DISTRIBUTION



Lumen Maintenance Factors (B Drive)

AMBIENT	INITIAL LMF	25K HR PROJECTED LMF	50K HR PROJECTED LMF	75K HR PROJECTED LMF	100K HR PROJECTED LMF
25°C	1.00	0.95	0.93	0.91	0.90
55°C	1.00	0.95	0.89	0.83	0.77
85°C	1.00	0.93	0.85	0.78	0.70
105°C	1.00	0.88	0.76	0.66	n/a

Each temperature has an independent initial value. In accordance with IESNA TM021011, Projected Values represent interpolated value based on time durations that are within six times (6X) the IESNA LM-80-08 total test duration (in hours) for the device under testing (DUT) i.e. the packaged LED chip). In accordance with IESNA TM-21-11, Calculated Values represent time durations that exceed six times (6X) the IESNA LM-80-08 total test duration (in hours) for the device under testing (DUT) i.e. the packaged LED chip)

Lumen Multiplier

AMBIENT TEMPERATURE	LUMEN MULTIPLIER
10°C	1.032
15°C	1.021
25°C	1.000
40°C	0.968
50°C	0.968

WHEN APPROVED, THE SPECIFICATIONS OUTLINED IN THIS SPEC SHEET SHALL BECOME THE SPECIFICATION FOR THE MATERIAL TO BE DELIVERED BY NORIBACHI ON THE CITED PROJECT. AN AMENDED SPEC SHEET CAN BE PROVIDED BUT ONLY AFTER WRITTEN APPROVAL BY THE CUSTOMER IS RECEIVED. THIS DOCUMENT IS THE PROPERTY OF NORIBACHI AND CAN ONLY BE USED IN CONNECTION WITH MATERIALS FURNISHED BY NORIBACHI. ©2015



WALLPACK.Y
 All products feature Noribachi's exclusive Bespoke Engineered and Specifically Tailored (BEST) manufacturing methodology.

CATALOG #:	TYPE:
PROJECT:	
COMMENTS:	DATE:
PREPARED BY:	

OPTIONAL UPGRADES

For additional optional upgrades, please contact your Noribachi Account Manager.

DIMMING

ORDER CODE: 010V
ORDER CODE: STEP
 Appearance And Specifications:
 •010V = 1 – 10V Dimming Functionality
 •STEP = Step Dimming Functionality
 *Compatibility not guaranteed for any particular dimmable light in any particular installation.



SURGE PROTECTOR

ORDER CODE: SGR1
ORDER CODE: SGR2
 Appearance And Specifications:
 •100V -120V Surge Protector
 •480V Surge Protector



OCCUPANCY SENSOR

ORDER CODE: OS
 Appearance And Specifications:
 •Compact design
 •Polycarbonate, flame retardant
 •UV and impact resistant



OUTDOOR OCCUPANCY SENSOR

ORDER CODE: OOS
 Appearance And Specifications:
 •IP Rating 65
 •360° lens
 •60' diameter coverage from 40' height



EMERGENCY BATTERY BACKUP

ORDER CODE: EM
 Appearance And Specifications:
 •Rain Tight For Outdoor Use
 •5W, 600 Lumens, 90 Minutes
 •Must provide exact voltage requirements in order code



EMERGENCY BATTERY BACKUP COLD

ORDER CODE: EMC
 Appearance And Specifications:
 •23W, 2000 Lumens, 90 Minutes
 •Must provide exact voltage requirements on order code



BUTTON PHOTOCELL 110V-130V

ORDER CODE: PC1
 Appearance And Specifications:
 •Rain Tight For Outdoor Use
 •1/2" Leads
 •Thermal Switch
 •Polycarbonate Enclosure & Eye
 •1/2" CdS Photocell
 •3/8" – 19 Thread Nipple with Rubber Gasket & Plastic Lock-Nut



BUTTON PHOTOCELL 208V-277V

ORDER CODE: PC2
 Appearance And Specifications:
 •Rain Tight For Outdoor Use
 •1/2" Leads
 •Thermal Switch
 •Polycarbonate Enclosure & Eye
 •1/2" CdS Photocell
 •3/8" – 19 Thread Nipple with Rubber Gasket & Plastic Lock-Nut



480V FOR UPTO 150W LIGHT ENGINES

ORDER CODE: HVI



WHEN APPROVED, THE SPECIFICATIONS OUTLINED IN THIS SPEC SHEET SHALL BECOME THE SPECIFICATION FOR THE MATERIAL TO BE DELIVERED BY NORIBACHI ON THE CITED PROJECT. AN AMENDED SPEC SHEET CAN BE PROVIDED BUT ONLY AFTER WRITTEN APPROVAL BY THE CUSTOMER IS RECEIVED. THIS DOCUMENT IS THE PROPERTY OF NORIBACHI AND CAN ONLY BE USED IN CONNECTION WITH MATERIALS FURNISHED BY NORIBACHI. ©2015



WALLPACK.Y
 All products feature Noribachi's exclusive Bespoke Engineered and Specifically Tailored (BEST) manufacturing methodology.

CATALOG #:	TYPE:
PROJECT:	
COMMENTS:	DATE:
PREPARED BY:	

OPTIONAL UPGRADES

CUSTOM FIXTURE COLOR
ORDER CODE: COL-[RAL]
 Appearance And Specifications:
 •Choose a custom color for your fixture.
 •RAL color code must be provided.



MARINE GRADE FIXTURE COATING
ORDER CODE: COAT
 Appearance And Specifications:
 •Add a Marine Grade coating to your fixture.
 •Coating appearance is green.



EPOXY COATING
ORDER CODE: EPOXY
 Appearance And Specifications:
 •Add epoxy coating to your fixture.



WHEN APPROVED, THE SPECIFICATIONS OUTLINED IN THIS SPEC SHEET SHALL BECOME THE SPECIFICATION FOR THE MATERIAL TO BE DELIVERED BY NORIBACHI ON THE CITED PROJECT. AN AMENDED SPEC SHEET CAN BE PROVIDED BUT ONLY AFTER WRITTEN APPROVAL BY THE CUSTOMER IS RECEIVED. THIS DOCUMENT IS THE PROPERTY OF NORIBACHI AND CAN ONLY BE USED IN CONNECTION WITH MATERIALS FURNISHED BY NORIBACHI. ©2015

