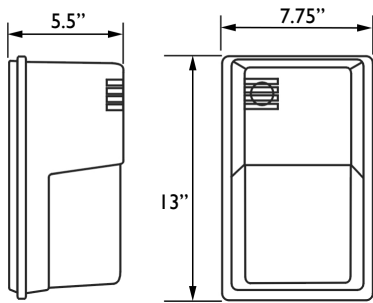


WALLPACK.S
 All products feature Noribachi's exclusive Bespoke Engineered and Specifically Tailored (BEST) manufacturing methodology.

CATALOG #:	TYPE:
PROJECT:	
COMMENTS:	DATE:
PREPARED BY:	

PRODUCT



Product Information

The Wallpack.S is a small, stylish LED lighting fixture.

This LED lighting fixture features heavy-duty die-cast aluminum housing with a high impact, glass lens.

Applications: Corporate Campuses, Recreational Facilities, Walkways and a variety of outdoor lighting applications.

Performance Summary

Lumens Range: 3,129 lm – 4,431 lm
 Lumens Per Watt (Typical): 141
 Light Engine: L70 Rated Lifetime of 100,000+ hours.
 CRI: Minimum 70 CRI. Custom CRI available upon request.
 CCT (Typical): 3000K, 4000K, 5700K
 Manufactured in the U.S. with parts from U.S. and imported.

Fixture Information

Housing: Bronze / Custom
 Lens: Prismatic Borosilicate Glass
 Mounting: Over Recessed Outlet Box / Surface Conduit
 Diffusion: None

Specifications*

UL / CSA Listed: Wet Locations
 Width: 7.75"
 Depth: 5.5"
 Height: 13"
 Weight: 6.00 lbs
 *Specifications are subject to change without notice

Electrical System Characteristics / Data

Standard AC input: 120-277 VAC
 EMI filter: 47CFR, part 2, part 15
 Power factor: > 0.9
 Total harmonic distortion: < 20%
 Surge protection: IEC/EN 61000-4-5 EMC test standard

Electrical characteristics and performance data verified by Nationally Recognized Testing Labs (NRTL). For full reports and results, visit www.noribachi.com/reports.

Ordering Information Sample Catalog Number: HEX-021-B-WW-MT-WPS						
LIGHT ENGINE	DRIVE CURRENT	COLOR TEMPERATURE	VOLTAGE	FIXTURE CODE	OPTIONAL UPGRADES	OPTIONAL BEAM SPREAD AND TYPE DISTRIBUTION
HEX-021 HEX-021	A B	CW – COOL WHITE (5700K TYPICAL) NW – NEUTRAL WHITE (4000K TYPICAL) WW – WARM WHITE (3000K TYPICAL)	MT	WPS–WALLPACK.S	PCI – 120V PHOTOCCELL PC2 – 208-288V PHOTOCCELL OS – OCCUPANCY SENSOR OOS – OUTDOOR OCCUPANCY SENSOR COAT – CUSTOM COAT EPOXY – EPOXY COATING EM – EMERGENCY BATTERY BACKUP, 5W, 600 LUMENS, 90 MINUTES* EMC – EMERGENCY BATTERY BACKUP, COLD, 23W, 2000 LUMENS, 90 MINUTES* SGR1 – 100 -277V SURGE PROTECTOR SGR2 – 480V SURGE PROTECTOR 010V – 1-10V DIMMING FUNCTIONALITY STEP – STEP DIMMING FUNCTIONALITY *MUST PROVIDE EXACT VOLTAGE REQUIREMENTS	80D – OPTIONAL 80° BEAM SPREAD T3 – OPTIONAL TYPE 3 DISTRIBUTION T4 – OPTIONAL TYPE 4 DISTRIBUTION

Warranty: Five-Year Limited Warranty. Optional 10-Year Manufacturer's Warranty Available. Full Warranty Terms Available At www.noribachi.com/products/warranty

WHEN APPROVED, THE SPECIFICATIONS OUTLINED IN THIS SPEC SHEET SHALL BECOME THE SPECIFICATION FOR THE MATERIAL TO BE DELIVERED BY NORIBACHI ON THE CITED PROJECT. AN AMENDED SPEC SHEET CAN BE PROVIDED BUT ONLY AFTER WRITTEN APPROVAL BY THE CUSTOMER IS RECEIVED. THIS DOCUMENT IS THE PROPERTY OF NORIBACHI AND CAN ONLY BE USED IN CONNECTION WITH MATERIALS FURNISHED BY NORIBACHI. ©2015



WALLPACK.S

All products feature Noribachi's exclusive Bespoke Engineered and Specifically Tailored (BEST) manufacturing methodology.

CATALOG #:	TYPE:
PROJECT:	
COMMENTS:	DATE:
PREPARED BY:	

ELECTRICAL

Construction

Die-cast aluminum housing with powdercoat finish with a molded prismatic borosilicate glass lens.

Optics

High brightness, high efficiency LEDs. Color temperature options include Cool White (5700K typical), Neutral White (4000K typical) Warm White (3000K typical) with minimum 70 CRI. Custom RGBW colors available. 120° beam angle standard. Optional 80° beam angle available.

Controls

Control options include Occupancy Sensor (OS) and Outdoor Occupancy Sensor (OOS). 120V Button Photocell (PC1) and 208V – 277V Button Photocell (PC2). 100-722V (SGR1) and 480V (SGR2) Surge Protectors. 0-10V (010V) and Step (STEP) Dimming functionality.

Mounting

Over Recessed Box and Surface Conduit mounting available.

Driver

Available in A drive current (325 mA) and B drive current (525 mA). Highly reliable. Suitable for dry, damp and wet locations. Compliant to worldwide safety regulations for lighting.

Testing Compliance

UL 1598 Issued: 2008/09/17 Ed:3 Rev:2012/10/17 UL Standard for Safety Luminaires CSA C22.2#250.0 Issued: 2008/09/17 Ed:3 Luminaires; General Instruction No.1 2010/01/11, General Instruction No. 2 2012/10/17.

Electrical System

Surge protection meets 10KV/5KA per ANSI/IEEE62.41. Driver meets maximum harmonic distortion (THD) of 20% and is ROHS compliant. Power Factor = > 0.9.

Ambient Temperature

-40°C to +65°C (-40°F to + 149°F).

Electrical Load					
LIGHT ENGINE	DRIVE	DRIVE CURRENT (AMPS@120V)	DRIVE CURRENT (AMPS@277V)	DRIVE CURRENT (AMPS@480V)	SYSTEM POWER* (WATTS)
HEX-021	A	0.18	0.08	0.04	21.03
HEX-021	B	0.26	0.11	0.07	31.46
*Ideal Wattage					

Operating Characteristics (Typical @5700K CCT)					
LIGHT ENGINE	DRIVE	LUMENS (TS)	INPUT POWER (WATTS)	LUMENS PER WATT	REPLACES
HEX-021	A	3,129	21.03	148.81	50-125W
HEX-021	B	4,431	31.46	140.86	75-175W

Manufacturing

Manufactured in beautiful Harbor City, CA. ARRA Compliant. NAFTA Compliant. Test and burn-in of 100% of all luminaires before shipment. No less than 8-years experience in manufacturing LED-based products.

Note

Specifications subject to change without notice. Actual performance may differ as a result of end-user environment application. Actual wattage may differ by +/- 8%.

WHEN APPROVED, THE SPECIFICATIONS OUTLINED IN THIS SPEC SHEET SHALL BECOME THE SPECIFICATION FOR THE MATERIAL TO BE DELIVERED BY NORIBACHI ON THE CITED PROJECT. AN AMENDED SPEC SHEET CAN BE PROVIDED BUT ONLY AFTER WRITTEN APPROVAL BY THE CUSTOMER IS RECEIVED. THIS DOCUMENT IS THE PROPERTY OF NORIBACHI AND CAN ONLY BE USED IN CONNECTION WITH MATERIALS FURNISHED BY NORIBACHI. ©2015



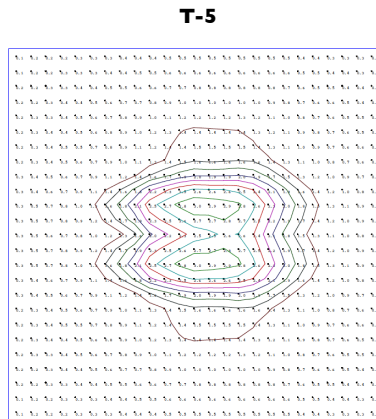
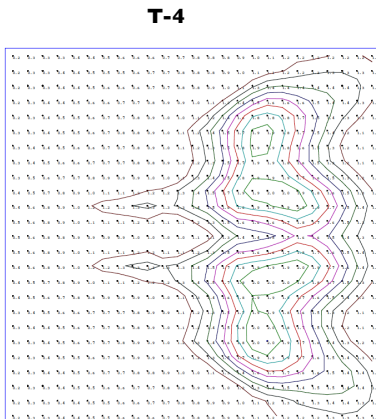
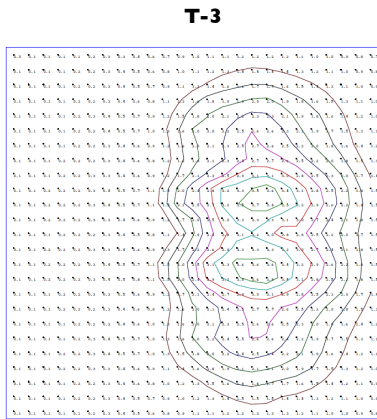
WALLPACK.S
 All products feature Noribachi's exclusive Bespoke Engineered and Specifically Tailored (BEST) manufacturing methodology.

CATALOG #:	TYPE:
PROJECT:	
COMMENTS:	DATE:
PREPARED BY:	

PERFORMANCE / DISTRIBUTION

Power And Lumens By Light Engine							
DISTRIBUTION							
LIGHT ENGINE	DRIVE	CCT	T1 (LUMENS)	T2 (LUMENS)	T3 (LUMENS)	T4 (LUMENS)	T5 (LUMENS)
HEX-021	A	5700	N/A	N/A	2,430	2,816	3,129
HEX-021	B	5700	N/A	N/A	3,441	3,988	4,431

**Type Distribution
 HEX-021**



•IES Type Distributions are generated in an open space.
 •Light Distribution images are mounted at 10 feet.

- Distribution**
- 120° Standard Beam Spread.
 - 80° Optional Beam Spread Available.
 - Other Light Engine Type Distribution Available Upon Request.

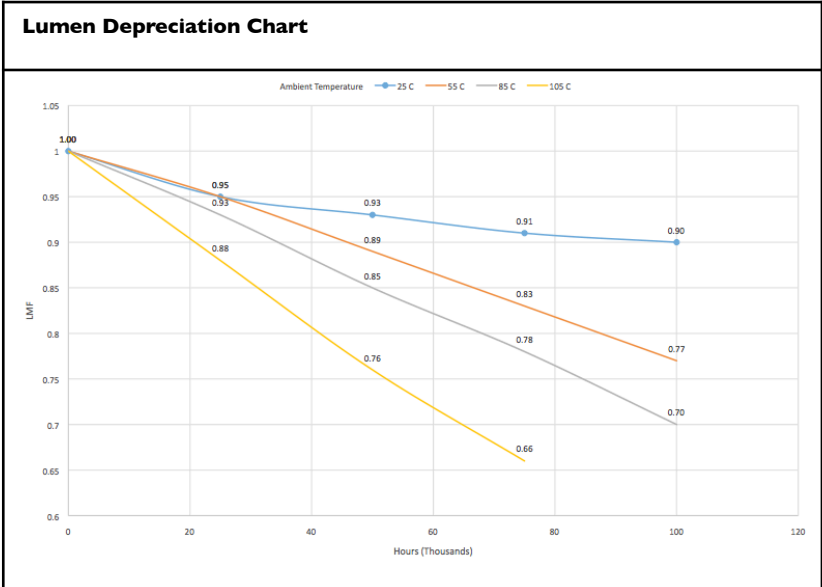
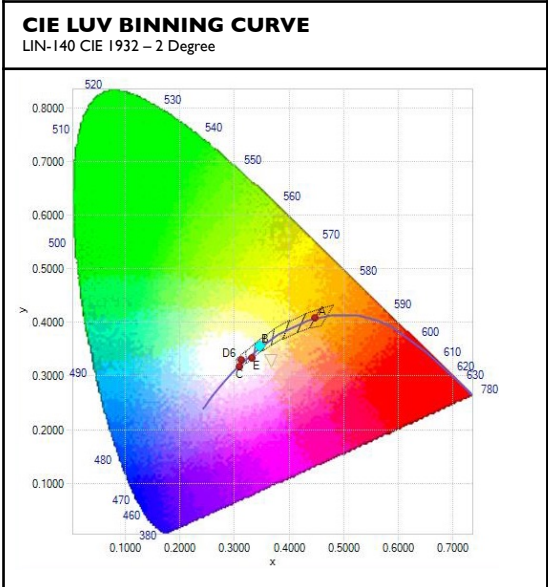
WHEN APPROVED, THE SPECIFICATIONS OUTLINED IN THIS SPEC SHEET SHALL BECOME THE SPECIFICATION FOR THE MATERIAL TO BE DELIVERED BY NORIBACHI ON THE CITED PROJECT. AN AMENDED SPEC SHEET CAN BE PROVIDED BUT ONLY AFTER WRITTEN APPROVAL BY THE CUSTOMER IS RECEIVED. THIS DOCUMENT IS THE PROPERTY OF NORIBACHI AND CAN ONLY BE USED IN CONNECTION WITH MATERIALS FURNISHED BY NORIBACHI. ©2015



WALLPACK.S
 All products feature Noribachi's exclusive Bespoke Engineered and Specifically Tailored (BEST) manufacturing methodology.

CATALOG #:	TYPE:
PROJECT:	
COMMENTS:	DATE:
PREPARED BY:	

PERFORMANCE / DISTRIBUTION



Lumen Maintenance Factors (B Drive)

AMBIENT	INITIAL LMF	25K HR PROJECTED LMF	50K HR PROJECTED LMF	75K HR PROJECTED LMF	100K HR PROJECTED LMF
25°C	1.00	0.95	0.93	0.91	0.90
55°C	1.00	0.95	0.89	0.83	0.77
85°C	1.00	0.93	0.85	0.78	0.70
105°C	1.00	0.88	0.76	0.66	n/a

Each temperature has an independent initial value. In accordance with IESNA TM021011, Projected Values represent interpolated value based on time durations that are within six times (6X) the IESNA LM-80-08 total test duration (in hours) for the device under testing (DUT) i.e. the packaged LED chip). In accordance with IESNA TM-21-11, Calculated Values represent time durations that exceed six times (6X) the IESNA LM-80-08 total test duration (in hours) for the device under testing (DUT) i.e. the packaged LED chip)

Lumen Multiplier

AMBIENT TEMPERATURE	LUMEN MULTIPLIER
10°C	1.032
15°C	1.021
25°C	1.000
40°C	0.968
50°C	0.968

WHEN APPROVED, THE SPECIFICATIONS OUTLINED IN THIS SPEC SHEET SHALL BECOME THE SPECIFICATION FOR THE MATERIAL TO BE DELIVERED BY NORIBACHI ON THE CITED PROJECT. AN AMENDED SPEC SHEET CAN BE PROVIDED BUT ONLY AFTER WRITTEN APPROVAL BY THE CUSTOMER IS RECEIVED. THIS DOCUMENT IS THE PROPERTY OF NORIBACHI AND CAN ONLY BE USED IN CONNECTION WITH MATERIALS FURNISHED BY NORIBACHI. ©2015



WALLPACK.S
 All products feature Noribachi's exclusive Bespoke Engineered and Specifically Tailored (BEST) manufacturing methodology.

CATALOG #:	TYPE:
PROJECT:	
COMMENTS:	DATE:
PREPARED BY:	

OPTIONAL UPGRADES

For additional optional upgrades, please contact your Noribachi Account Manager.

DIMMING

ORDER CODE: 010V
ORDER CODE: STEP
 Appearance And Specifications:
 •010V = 1 – 10V Dimming Functionality
 •STEP = Step Dimming Functionality
 *Compatibility not guaranteed for any particular dimmable light in any particular installation.



SURGE PROTECTOR

ORDER CODE: SGR1
ORDER CODE: SGR2
 Appearance And Specifications:
 •100V -120V Surge Protector
 •480V Surge Protector



OCCUPANCY SENSOR

ORDER CODE: OS
 Appearance And Specifications:
 •Compact design
 •Polycarbonate, flame retardant
 •UV and impact resistant



OUTDOOR OCCUPANCY SENSOR

ORDER CODE: OOS
 Appearance And Specifications:
 •IP Rating 65
 •360° lens
 •60' diameter coverage from 40' height



BUTTON PHOTOCELL 110V-130V

ORDER CODE: PCI
 Appearance And Specifications:
 •Rain Tight For Outdoor Use
 •12" Leads
 •Thermal Switch
 •Polycarbonate Enclosure & Eye
 •1/2" CdS Photocell
 •3/8" – 19 Thread Nipple with Rubber Gasket & Plastic Lock-Nut



BUTTON PHOTOCELL 208V-277V

ORDER CODE: PC2
 Appearance And Specifications:
 •Rain Tight For Outdoor Use
 •12" Leads
 •Thermal Switch
 •Polycarbonate Enclosure & Eye
 •1/2" CdS Photocell
 •3/8" – 19 Thread Nipple with Rubber Gasket & Plastic Lock-Nut



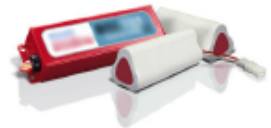
EMERGENCY BATTERY BACKUP

ORDER CODE: EM
 Appearance And Specifications:
 •Rain Tight For Outdoor Use
 •5V, 600 Lumens, 90 Minutes
 •Must provide exact voltage requirements in order code



EMERGENCY BATTERY BACKUP COLD

ORDER CODE: EMC
 Appearance And Specifications:
 •23W, 2000 Lumens, 90 Minutes
 •Must provide exact voltage requirements on order code



WHEN APPROVED, THE SPECIFICATIONS OUTLINED IN THIS SPEC SHEET SHALL BECOME THE SPECIFICATION FOR THE MATERIAL TO BE DELIVERED BY NORIBACHI ON THE CITED PROJECT. AN AMENDED SPEC SHEET CAN BE PROVIDED BUT ONLY AFTER WRITTEN APPROVAL BY THE CUSTOMER IS RECEIVED. THIS DOCUMENT IS THE PROPERTY OF NORIBACHI AND CAN ONLY BE USED IN CONNECTION WITH MATERIALS FURNISHED BY NORIBACHI. ©2015



WALLPACK.S
 All products feature Noribachi's exclusive Bespoke Engineered and Specifically Tailored (BEST) manufacturing methodology.

CATALOG #:	TYPE:
PROJECT:	
COMMENTS:	DATE:
PREPARED BY:	

OPTIONAL UPGRADES

CUSTOM FIXTURE COLOR
ORDER CODE: COL-[RAL]
 Appearance And Specifications:
 •Choose a custom color for your fixture.
 •RAL color code must be provided.



MARINE GRADE FIXTURE COATING
ORDER CODE: COAT
 Appearance And Specifications:
 •Add a Marine Grade coating to your fixture.
 •Coating appearance is green.



EPOXY COATING
ORDER CODE: EPOXY
 Appearance And Specifications:
 •Add epoxy coating to your fixture.



WHEN APPROVED, THE SPECIFICATIONS OUTLINED IN THIS SPEC SHEET SHALL BECOME THE SPECIFICATION FOR THE MATERIAL TO BE DELIVERED BY NORIBACHI ON THE CITED PROJECT. AN AMENDED SPEC SHEET CAN BE PROVIDED BUT ONLY AFTER WRITTEN APPROVAL BY THE CUSTOMER IS RECEIVED. THIS DOCUMENT IS THE PROPERTY OF NORIBACHI AND CAN ONLY BE USED IN CONNECTION WITH MATERIALS FURNISHED BY NORIBACHI. ©2015

