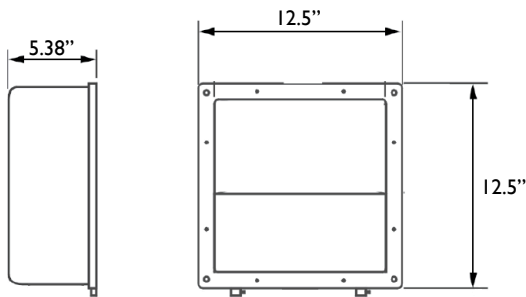


SHOEBOX.S
 All products feature Noribachi's exclusive Bespoke Engineered and Specifically Tailored (BEST) manufacturing methodology.

CATALOG #:	TYPE:
PROJECT:	
COMMENTS:	DATE:
PREPARED BY:	

PRODUCT



Product Information

The Shoebox.S is an efficient, high-output LED lighting fixture.

This fixture features die-cast aluminum housing, hinged top frame and bronzed powdercoat finish over chromate conversion coating.

Applications: Corporate Campuses, Parking Lots, Recreational Facilities and a variety of outdoor lighting applications.

Performance Summary

Lumens Range: 4,431 lm – 13,293 lm
 Lumens Per Watt (Typical): 141
 Light Engine: L70 Rated Lifetime of 100,000+ hours.
 CRI: Minimum 70 CRI. Custom CRI available upon request.
 CCT (Typical): 3000K, 4000K, 5700K
 Manufactured in the U.S. with parts from U.S. and imported.

Fixture Information

Housing: Dark Bronze / Custom
 Lens: Tempered Glass
 Mounting: Trunnion / Slip-fitter
 Diffusion: None

Specifications*

CSA Listed: Wet Locations
 Length: 12.5"
 Width: 12.5"
 Depth: 5.38"
 Weight: 11.00 lbs

* Specifications are subject to change without notice.

Electrical System Characteristics / Data

Standard AC input: 120-277 VAC
 EMI filter: 47CFR, part 2, part 15
 Power factor: > 0.9
 Total harmonic distortion: < 20%
 Surge protection: IEC/EN 61000-4-5 EMC test standard

Electrical characteristics and performance data verified by Nationally Recognized Testing Labs (NRTL). For full reports and results, visit www.noribachi.com/reports.

Ordering Information Sample Catalog Number: HEX-063-B-WW-MT-SBS						
LIGHT ENGINE	DRIVE CURRENT	COLOR TEMPERATURE	VOLTAGE	FIXTURE CODE	OPTIONAL UPGRADES	OPTIONAL BEAM SPREAD AND TYPE DISTRIBUTION
HEX-021 HEX-042 HEX-063	B B B	CW – COOL WHITE (5700K TYPICAL) NW – NEUTRAL WHITE (4000K TYPICAL) WW – WARM WHITE (3000K TYPICAL)	MT	SBS – SHOEBOX.S	PC1 – 120V BUTTON PHOTOCELL PC2 – 208-277V BUTTON PHOTOCELL TR – TRUNNION MOUNT SF – SLIP-FITTER MOUNT HV1 – 480V UP TO 150W EM – EMERGENCY BATTERY BACKUP, 5W, 600 LUMENS, 90 MINUTES* EMC – EMERGENCY BATTERY BACKUP, COLD 23W, 2000, 90 MINUTES* AM6 – 6" ARM MOUNT AM10 – 10" ARM MOUNT AM6R – 6" ARM MOUNT FOR ROUND POLE+ AM10R – 10" ARM MOUNT FOR ROUND POLE+ PMOCC120 – POLE MOUNTED OCCUPANCY SENSOR 120V PMOCC277 – POLE MOUNTED OCCUPANCY SENSOR 277V VG – VANDAL RESISTANT GUARD SQBRK – WALL MOUNT BRACKET** COL [RAL] – CUSTOM FIXTURE COLOR COAT – MARINE GRADE FIXTURE COATING EPOXY – EPOXY COATING SGR1 – 100-277V SURGE PROTECTOR SGR2 – 480V SURGE PROTECTOR 010V – 1-10V DIMMING FUNCTIONALITY STEP – STEP DIMMING FUNCTIONALITY *MUST PROVIDE POLE DIAMETER IN ORDER **MUST PROVIDE EXACT VOLTAGE REQUIREMENTS #16" OR 10" MOUNT REQUIRED	80D – OPTIONAL 80° BEAM SPREAD T1 – OPTIONAL TYPE 1 DISTRIBUTION T2 – OPTIONAL TYPE 2 DISTRIBUTION T3 – OPTIONAL TYPE 3 DISTRIBUTION T4 – OPTIONAL TYPE 4 DISTRIBUTION TRS or TLS – OPTIONAL RIGHT OR LEFT SLANTED DISTRIBUTION

Warranty: Five-Year Limited Warranty. Optional 10-Year Manufacturer's Warranty Available. Full Warranty Terms Available At www.noribachi.com/products/warranty

WHEN APPROVED, THE SPECIFICATIONS OUTLINED IN THIS SPEC SHEET SHALL BECOME THE SPECIFICATION FOR THE MATERIAL TO BE DELIVERED BY NORIBACHI ON THE CITED PROJECT. AN AMENDED SPEC SHEET CAN BE PROVIDED BUT ONLY AFTER WRITTEN APPROVAL BY THE CUSTOMER IS RECEIVED. THIS DOCUMENT IS THE PROPERTY OF NORIBACHI AND CAN ONLY BE USED IN CONNECTION WITH MATERIALS FURNISHED BY NORIBACHI. ©2015



SHOEBOX.S

All products feature Noribachi's exclusive Bespoke Engineered and Specifically Tailored (BEST) manufacturing methodology.

CATALOG #:	TYPE:
PROJECT:	
COMMENTS:	DATE:
PREPARED BY:	

ELECTRICAL

Construction

Die-cast aluminum housing with textured architectural bronze powdercoat finish over a chromate conversion coating with tempered clear glass. Features, hinged top frame, 1/2 coin plugs with O-rings for conduit and photocell.

Optics

High brightness, high efficiency LEDs. Color temperature options include Cool White (5700K typical), Neutral White (4000K typical) Warm White (3000K typical) with minimum 70 CRI. Custom RGBW colors available. 120° beam angle standard. Optional 80° beam angle available. Optional T1 – T5 light distribution available. Right (TRS) or Left (TLS) Slanted light distribution also available.

Controls

Control options include 120V (PC1) and 208-277V (PC2) button photocells. 480V for up to 150W light engines (HVI). Emergency Battery Backup (EM) and Emergency Battery Backup, Cold (EMC). 100-722V (SGR1) and 480V (SGR2) Surge Protectors. 0-10V (010V) and Step (STEP) Dimming functionality available. Pole Mounted Occupancy Sensor for 120V (PMOCC120) and 277V (PMOCC277) also available.

Mounting

Trunnion (TR) and Slip-fitter (SF) mounting options available for this fixture. 6" Pole Mount for Round Arm (AM6R) and 10" Pole Mount for Round Mount (AM10R) also available.

Driver

Available in B drive current (525 mA). Highly reliable. Suitable for dry, damp and wet locations. Compliant to worldwide safety regulations for lighting.

Testing Compliance

UL 1598 Issued: 2008/09/17 Ed:3 Rev:2012/10/17 UL Standard for Safety Luminaires CSA C22.2#250.0 Issued: 2008/09/17 Ed:3 Luminaires; General Instruction No.1 2010/01/11, General Instruction No. 2 2012/10/17. (ANSI/UL 8750). UL Standard for Safety for Light Emitting Diode (LED) Equipment for use in Lighting Products - First Edition; Dated 2009/11/18. 101514278LAX-001 revised 27-Jun-2014.

Electrical System

Surge protection meets 10KV/5KA per ANSI/IEEE62.41. Driver meets maximum harmonic distortion (THD) of 20% and is ROHS compliant. Power Factor = > 0.9.

Ambient Temperature

-40°C to +65°C (-40°F to + 149°F).

Electrical Load					
LIGHT ENGINE	DRIVE	DRIVE CURRENT (AMPS@120V)	DRIVE CURRENT (AMPS@277V)	DRIVE CURRENT (AMPS@480V)	SYSTEM POWER* (WATTS)
HEX-021	B	0.26	0.11	0.07	31.46
HEX-042	B	0.53	0.23	0.13	63.02
HEX-063	B	0.79	0.34	0.20	94.70
*Ideal Wattage					

Operating Characteristics (Typical @5700K CCT)					
LIGHT ENGINE	DRIVE	LUMENS (T5)	INPUT POWER (WATTS)	LUMENS PER WATT	REPLACES
HEX-021	B	4,431	31.46	140.86	75-175W
HEX-042	B	8,862	63.02	140.62	125-300W
HEX-063	B	13,293	94.70	140.37	200-400W

Manufacturing

Manufactured in beautiful Harbor City, CA. ARRA Compliant. NAFTA Compliant. Test and burn-in of 100% of all luminaires before shipment. No less than 8-years experience in manufacturing LED-based products.

Note

Specifications subject to change without notice. Actual performance may differ as a result of end-user environment application. Actual wattage may differ by +/- 8%.

WHEN APPROVED, THE SPECIFICATIONS OUTLINED IN THIS SPEC SHEET SHALL BECOME THE SPECIFICATION FOR THE MATERIAL TO BE DELIVERED BY NORIBACHI ON THE CITED PROJECT. AN AMENDED SPEC SHEET CAN BE PROVIDED BUT ONLY AFTER WRITTEN APPROVAL BY THE CUSTOMER IS RECEIVED. THIS DOCUMENT IS THE PROPERTY OF NORIBACHI AND CAN ONLY BE USED IN CONNECTION WITH MATERIALS FURNISHED BY NORIBACHI. ©2015



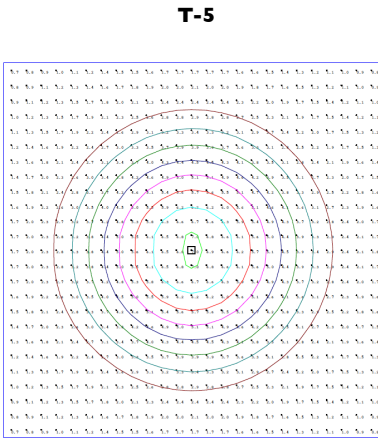
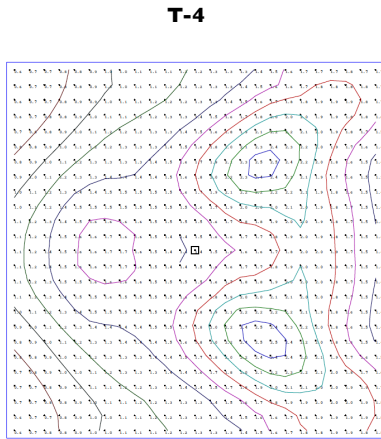
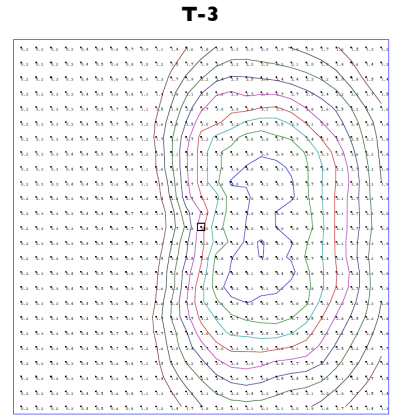
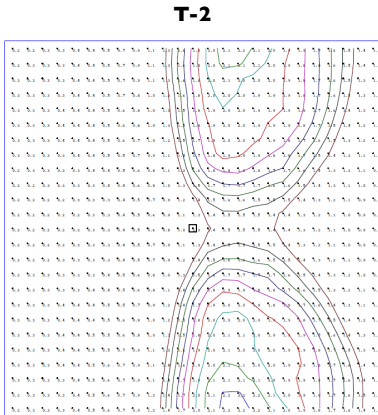
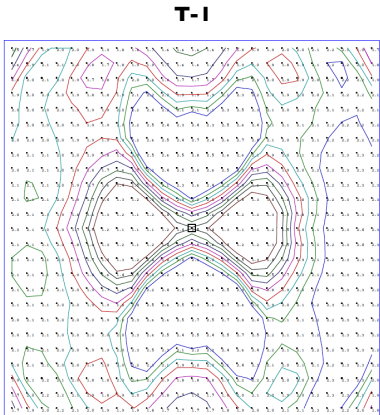
SHOEBOX.S
 All products feature Noribachi's exclusive Bespoke Engineered and Specifically Tailored (BEST) manufacturing methodology.

CATALOG #:	TYPE:
PROJECT:	
COMMENTS:	DATE:
PREPARED BY:	

PERFORMANCE / DISTRIBUTION

Power And Lumens By Light Engine							
DISTRIBUTION							
LIGHT ENGINE	DRIVE	CCT	T1 (LUMENS)	T2 (LUMENS)	T3 (LUMENS)	T4 (LUMENS)	T5 (LUMENS)
HEX-021	B	5700	4,354	3,450	4,209	3,988	4,431
HEX-042	B	5700	8,708	6,899	8,419	7,976	8,862
HEX-063	B	5700	13,062	10,349	12,628	11,963	13,293

**Type Distribution
 HEX-063**



- Distribution**
- 120° Standard Beam Spread.
 - 80° Optional Beam Spread Available.
 - T1 – T5 Light Distribution Available.
 - Right (TRS) or Left (TLS) Slanted Distribution Available.
 - Other Light Engine Type Distribution Available Upon Request.

•IES Type Distributions are generated in an open space.
 •Light Distribution images are mounted at 10 feet.

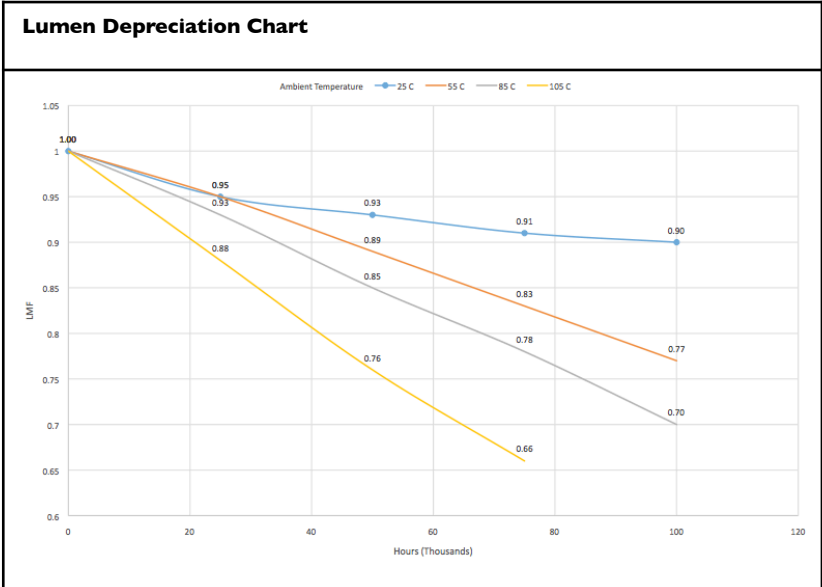
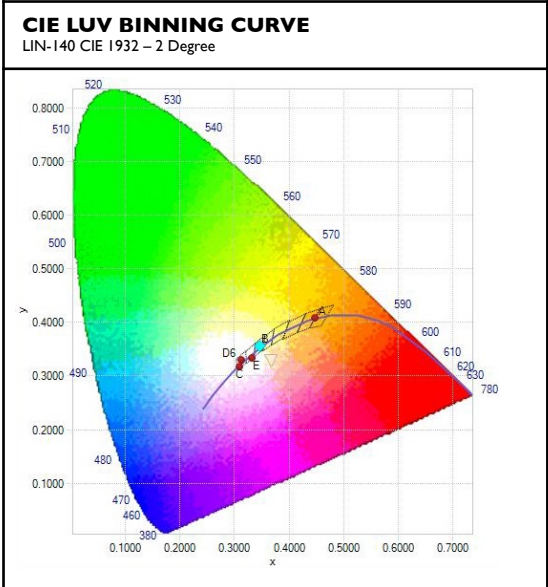
WHEN APPROVED, THE SPECIFICATIONS OUTLINED IN THIS SPEC SHEET SHALL BECOME THE SPECIFICATION FOR THE MATERIAL TO BE DELIVERED BY NORIBACHI ON THE CITED PROJECT. AN AMENDED SPEC SHEET CAN BE PROVIDED BUT ONLY AFTER WRITTEN APPROVAL BY THE CUSTOMER IS RECEIVED. THIS DOCUMENT IS THE PROPERTY OF NORIBACHI AND CAN ONLY BE USED IN CONNECTION WITH MATERIALS FURNISHED BY NORIBACHI. ©2015



SHOEBOX.S
 All products feature Noribachi's exclusive Bespoke Engineered and Specifically Tailored (BEST) manufacturing methodology.

CATALOG #:	TYPE:
PROJECT:	
COMMENTS:	DATE:
PREPARED BY:	

PERFORMANCE / DISTRIBUTION



Lumen Maintenance Factors (B Drive)

AMBIENT	INITIAL LMF	25K HR PROJECTED LMF	50K HR PROJECTED LMF	75K HR PROJECTED LMF	100K HR PROJECTED LMF
25°C	1.00	0.95	0.93	0.91	0.90
55°C	1.00	0.95	0.89	0.83	0.77
85°C	1.00	0.93	0.85	0.78	0.70
105°C	1.00	0.88	0.76	0.66	n/a

Each temperature has an independent initial value. In accordance with IESNA TM021011, Projected Values represent interpolated value based on time durations that are within six times (6X) the IESNA LM-80-08 total test duration (in hours) for the device under testing (DUT) i.e. the packaged LED chip. In accordance with IESNA TM-21-11, Calculated Values represent time durations that exceed six times (6X) the IESNA LM-80-08 total test duration (in hours) for the device under testing (DUT) i.e. the packaged LED chip

Luminaire EPA Chart

	Single	0.5
	ND-180°	1.0
	ND-90°	0.8
	NT-90°	1.7
	NT-120°	1.7
	NQ-90°	1.9

Note: Mounting changes fixture EPA. Please contact Noribachi for additional information.

Lumen Multiplier

AMBIENT TEMPERATURE	LUMEN MULTIPLIER
10°C	1.032
15°C	1.021
25°C	1.000
40°C	0.968
50°C	0.946

WHEN APPROVED, THE SPECIFICATIONS OUTLINED IN THIS SPEC SHEET SHALL BECOME THE SPECIFICATION FOR THE MATERIAL TO BE DELIVERED BY NORIBACHI ON THE CITED PROJECT. AN AMENDED SPEC SHEET CAN BE PROVIDED BUT ONLY AFTER WRITTEN APPROVAL BY THE CUSTOMER IS RECEIVED. THIS DOCUMENT IS THE PROPERTY OF NORIBACHI AND CAN ONLY BE USED IN CONNECTION WITH MATERIALS FURNISHED BY NORIBACHI. ©2015



SHOEBOX.S
 All products feature Noribachi's exclusive Bespoke Engineered and Specifically Tailored (BEST) manufacturing methodology.

CATALOG #:	TYPE:
PROJECT:	
COMMENTS:	DATE:
PREPARED BY:	

OPTIONAL UPGRADES

For additional optional upgrades, please contact your Noribachi Account Manager.

BUTTON PHOTOCELL 110V-130V
ORDER CODE: PCI
 Appearance And Specifications:
 •Rain Tight For Outdoor Use
 •12" Leads
 •Thermal Switch
 •Polycarbonate Enclosure & Eye
 •1/2" CdS Photozell
 •3/8" – 19 Thread Nipple with Rubber Gasket & Plastic Lock-Nut



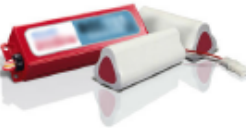
EMERGENCY BATTERY BACKUP
ORDER CODE: EM
 Appearance And Specifications:
 •Rain Tight For Outdoor Use
 •5W, 600 Lumens, 90 Minutes
 •Must provide exact voltage requirements in order code



BUTTON PHOTOCELL 208V-277V
ORDER CODE: PC2
 Appearance And Specifications:
 •Rain Tight For Outdoor Use
 •12" Leads
 •Thermal Switch
 •Polycarbonate Enclosure & Eye
 •1/2" CdS Photozell
 •3/8" – 19 Thread Nipple with Rubber Gasket & Plastic Lock-Nut



EMERGENCY BATTERY BACKUP COLD
ORDER CODE: EMC
 Appearance And Specifications:
 •23W, 2000 Lumens, 90 Minutes
 •Must provide exact voltage requirements on order code



DIMMING
ORDER CODE: 010V
ORDER CODE: STEP
 Appearance And Specifications:
 •010V = 1 – 10V Dimming Functionality
 •STEP = Step Dimming Functionality
 *Compatibility not guaranteed for any particular dimmable light in any particular installation.



SURGE PROTECTOR
ORDER CODE: SGR1
ORDER CODE: SGR2
 Appearance And Specifications:
 •100V - 120V Surge Protector
 •480V Surge Protector



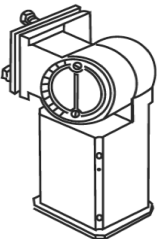
480V FOR UPTO 150W LIGHT ENGINES
ORDER CODE: HVI



POLE MOUNTED OCCUPANCY SENSOR
ORDER CODE: PMOCC120
ORDER CODE: PMOCC277
 Appearance And Specifications
 •Weatherproof and rain tight
 •Operational in -40° to 130°F
 •52.5 ft sensor coverage
 •270° field of view



SLIP-FITTER
ORDER CODE: SF
 Appearance And Specifications
 •Die-cast Aluminum
 •Bronze or Custom Color



WHEN APPROVED, THE SPECIFICATIONS OUTLINED IN THIS SPEC SHEET SHALL BECOME THE SPECIFICATION FOR THE MATERIAL TO BE DELIVERED BY NORIBACHI ON THE CITED PROJECT. AN AMENDED SPEC SHEET CAN BE PROVIDED BUT ONLY AFTER WRITTEN APPROVAL BY THE CUSTOMER IS RECEIVED. THIS DOCUMENT IS THE PROPERTY OF NORIBACHI AND CAN ONLY BE USED IN CONNECTION WITH MATERIALS FURNISHED BY NORIBACHI. ©2015

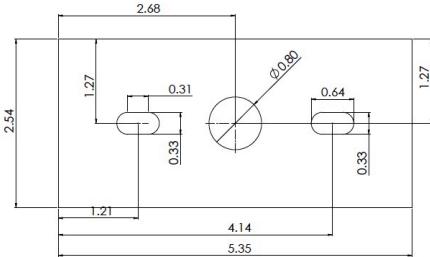


SHOEBOX.S
 All products feature Noribachi's exclusive Bespoke Engineered and Specifically Tailored (BEST) manufacturing methodology.

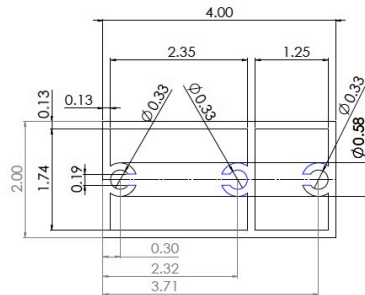
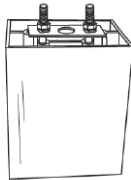
CATALOG #:	TYPE:
PROJECT:	
COMMENTS:	DATE:
PREPARED BY:	

OPTIONAL UPGRADES

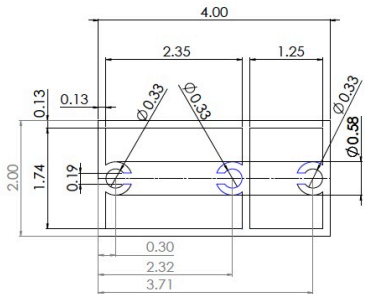
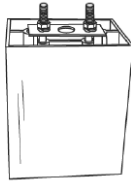
TRUNNION MOUNT
ORDER CODE: TR
 Appearance And Specifications
 •Steel
 •Adjustable aiming over 180° arc
 •Mounting can be locked securely in place
 •Powder Coating



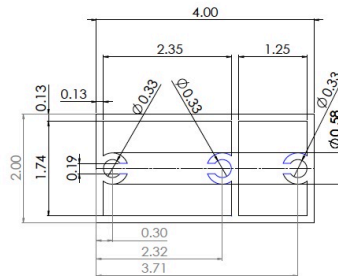
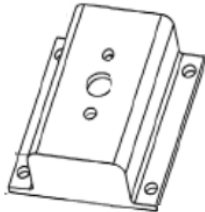
6" ARM MOUNT
ORDER CODE: AM6
ORDER CODE: AM6R*
 Appearance And Specifications
 •Die-cast Aluminum
 •Bronze or custom color
 •6" Configuration
 •*Denotes 6" or 10" Arm Mount for Round Pole.
 •Pole diameter must be specified on order.



10" ARM MOUNT
ORDER CODE: AM10
ORDER CODE: AM10*
 Appearance And Specifications
 •Die-cast Aluminum
 •Bronze or custom color
 •10" Configuration
 •*Denotes 6" or 10" Arm Mount for Round Pole.
 •Pole diameter must be specified on order.



WALL MOUNT BRACKET
ORDER CODE: SQBRK
 Appearance And Specifications
 •Steel



WHEN APPROVED, THE SPECIFICATIONS OUTLINED IN THIS SPEC SHEET SHALL BECOME THE SPECIFICATION FOR THE MATERIAL TO BE DELIVERED BY NORIBACHI ON THE CITED PROJECT. AN AMENDED SPEC SHEET CAN BE PROVIDED BUT ONLY AFTER WRITTEN APPROVAL BY THE CUSTOMER IS RECEIVED. THIS DOCUMENT IS THE PROPERTY OF NORIBACHI AND CAN ONLY BE USED IN CONNECTION WITH MATERIALS FURNISHED BY NORIBACHI. ©2015



SHOEBOX.S
 All products feature Noribachi's exclusive Bespoke Engineered and Specifically Tailored (BEST) manufacturing methodology.

CATALOG #:	TYPE:
PROJECT:	
COMMENTS:	DATE:
PREPARED BY:	

OPTIONAL UPGRADES

CUSTOM FIXTURE COLOR
ORDER CODE: COL-[RAL]
 Appearance And Specifications:
 •Choose a custom color for your fixture.
 •RAL color code must be provided.



MARINE GRADE FIXTURE COATING
ORDER CODE: COAT
 Appearance And Specifications:
 •Add a Marine Grade coating to your fixture.
 •Coating appearance is green.



EPOXY COATING
ORDER CODE: EPOXY
 Appearance And Specifications:
 •Add epoxy coating to your fixture.



WHEN APPROVED, THE SPECIFICATIONS OUTLINED IN THIS SPEC SHEET SHALL BECOME THE SPECIFICATION FOR THE MATERIAL TO BE DELIVERED BY NORIBACHI ON THE CITED PROJECT. AN AMENDED SPEC SHEET CAN BE PROVIDED BUT ONLY AFTER WRITTEN APPROVAL BY THE CUSTOMER IS RECEIVED. THIS DOCUMENT IS THE PROPERTY OF NORIBACHI AND CAN ONLY BE USED IN CONNECTION WITH MATERIALS FURNISHED BY NORIBACHI. ©2015

