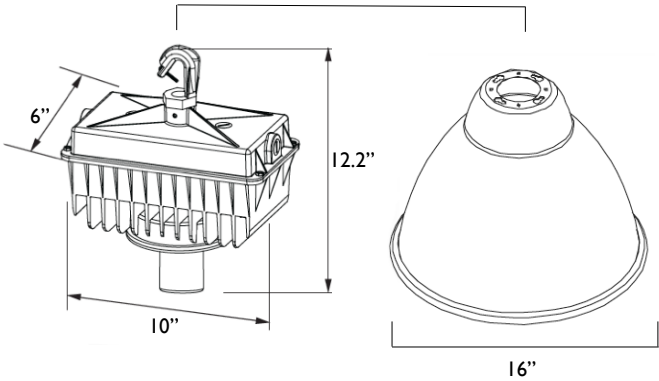


**HIGHBAY.DM**  
 All products feature Noribachi's exclusive Bespoke Engineered and Specifically Tailored (BEST) manufacturing methodology.

CATALOG #:	TYPE:
PROJECT:	
COMMENTS:	DATE:
PREPARED BY:	

**PRODUCT**



**Product Information**

The Highbay.DM is a rounded, energy-saving indoor LED lighting solution. This lighting fixture features a die-cast aluminum housing with a powdercoat finish.

Applications: Manufacturing Floors, Retail Environments, Warehouses and a variety of other indoor lighting applications.

**Performance Summary**

Lumens Range: 13,293lm - 22,155lm  
 Lumens Per Watt (Typical): 141  
 Light Engine: L70 Rated Lifetime of 100,000+ hours.  
 CRI: Minimum 70 CRI. Custom CRI available upon request.  
 CCT (Typical): 3000K, 4000K, 5700K  
 Manufactured in the U.S. with parts from U.S. and imported.

**Fixture Information**

Housing: White / Custom  
 Dome (Standard): Acrylic  
 Lens: Optional / None  
 Mounting: Hook  
 Diffusion: Reflector

**Specifications**

Length: 10"  
 Width: 6"  
 Height: 12.2"  
 Reflector Diameter: 16"

\*Specifications are subject to change without notification.

**Electrical System Characteristics / Data**

Standard AC input: 120-277 VAC  
 EMI filter: 47CFR, part 2, part 15  
 Power factor: > 0.9  
 Total harmonic distortion: < 20%  
 Surge protection: IEC/EN 61000-4-5 EMC test standard

**Electrical characteristics and performance data verified by Nationally Recognized Testing Labs (NRTL). For full reports and results, visit [www.noribachi.com/reports](http://www.noribachi.com/reports).**

Ordering Information Sample Catalog Number: HEX-105-B-WW-MT-HBDM						
LIGHT ENGINE	DRIVE CURRENT	COLOR TEMPERATURE	VOLTAGE	FIXTURE CODE	OPTIONAL UPGRADES	OPTIONAL BEAM SPREAD
<b>HEX-063</b> <b>HEX-084</b> <b>HEX-105</b>	<b>B</b> <b>B</b> <b>B</b>	<b>CW</b> – COOL WHITE (5700K TYPICAL) <b>NW</b> – NEUTRAL WHITE (4000K TYPICAL) <b>WW</b> – WARM WHITE (3000K TYPICAL)	<b>MT</b>	<b>HBDM</b> – HIGHBAY.DM	<b>HV1</b> – 480V UP TO 150W <b>HV2</b> – 480V GREATER THAN 150W <b>EM</b> – EMERGENCY BATTERY BACKUP, SW, 600 LUMENS, 90 MINUTES* <b>EMC</b> – EMERGENCY BATTERY BACKUP, COLD 23W, 2000, 90 MINUTES* <b>CORD6</b> – 6' 16/3 600V STW CORD <b>L515</b> – L515P 120V TWIST LOCK PLUG <b>L615</b> – L615P 240V TWIST LOCK PLUG <b>L715</b> – L715P 277V TWIST LOCK PLUG <b>L720</b> – L20P 277V TWIST LOCK PLUG <b>L820</b> – L820P 480V TWIST LOCK PLUG <b>L830</b> – L830P 480V TWIST LOCK PLUG <b>OS</b> – OCCUPANCY SENSOR <b>LENS</b> – LENS <b>ALUM</b> – ALUMINUM DOME OPTION <b>WG</b> – WIRE GUARD <b>DHS</b> – DAYLIGHT HARVEST SENSOR <b>COL-[RAL]</b> – CUSTOM FIXTURE COLOR <b>COAT</b> – MARINE GRADE FIXTURE COATING <b>EPOXY</b> – EPOXY COATING <b>SGR1</b> – 100 -277V SURGE PROTECTOR <b>SGR2</b> – 480V SURGE PROTECTOR <b>010V</b> – 1-10V DIMMING FUNCTIONALITY <b>STEP</b> – STEP DIMMING FUNCTIONALITY *MUST PROVIDE EXACT VOLTAGE REQUIREMENT	<b>80D</b> – OPTIONAL 80° BEAM SPREAD

Warranty: Five-Year Limited Warranty. Optional 10-Year Manufacturer's Warranty Available. Full Warranty Terms Available At [www.noribachi.com/products/warranty](http://www.noribachi.com/products/warranty)

WHEN APPROVED, THE SPECIFICATIONS OUTLINED IN THIS SPEC SHEET SHALL BECOME THE SPECIFICATION FOR THE MATERIAL TO BE DELIVERED BY NORIBACHI ON THE CITED PROJECT. AN AMENDED SPEC SHEET CAN BE PROVIDED BUT ONLY AFTER WRITTEN APPROVAL BY THE CUSTOMER IS RECEIVED. THIS DOCUMENT IS THE PROPERTY OF NORIBACHI AND CAN ONLY BE USED IN CONNECTION WITH MATERIALS FURNISHED BY NORIBACHI. ©2015



**HIGHBAY.DM**  
 All products feature Noribachi's exclusive Bespoke Engineered and Specifically Tailored (BEST) manufacturing methodology.

CATALOG #:	TYPE:
PROJECT:	
COMMENTS:	DATE:
PREPARED BY:	

**ELECTRICAL**

**Construction**  
 Heavy-duty die-cast aluminum housing, powdercoat finish over a chromate on version coating. Acrylic Dome Standard with Optional Aluminum (ALUM) Dome available. Optional Wire Guard (WG) and Bottom lens (LENS) available.

**Optics**  
 High brightness, high efficiency LEDs. Color temperature options include Cool White (5700K typical), Neutral White (4000K typical) Warm White (3000K typical) with minimum 70 CRI. Custom RGBW colors available. 120° beam angle standard. Optional 80° beam angle available.

**Controls**  
 Controls include 480V for up to 150W light engines (HV1) and 480V for 150W-299W light engines (HV2). 100-722V (SGR1) and 480V (SGR2) Surge Protectors. 0-10V (010V) and Step (STEP) Dimming functionality. Occupancy (OS) and Daylight Harvest Sensors (DHS). Emergency Battery Backup (EM) and Emergency Battery Backup, Cold (EMC).

**Mounting**  
 Hook mounting available for this fixture.

**Driver**  
 Available in B drive current (525 mA). Highly reliable. Suitable for dry, damp and wet locations. Compliant to worldwide safety regulations for lighting.

**Testing Compliance**  
 UL 1598 Issued: 2008/09/17 Ed:3 Rev:2012/10/17 UL Standard for Safety Luminaires CSA C22.2#250.0 Issued: 2008/09/17 Ed:3 Luminaires; General Instruction No.1 2010/01/11, General Instruction No. 2 2012/10/17.

**Electrical System**  
 Surge protection meets 10KV/5KA per ANSI/IEEE62.41. Driver meets maximum harmonic distortion (THD) of 20% and is ROHS compliant. Power Factor = > 0.9.

**Ambient Temperature**  
 -40°C to +65°C (-40°F to + 149°F).

Electrical Load					
LIGHT ENGINE	DRIVE	DRIVE CURRENT (AMPS@120V)	DRIVE CURRENT (AMPS@277V)	DRIVE CURRENT (AMPS@480V)	SYSTEM POWER* (WATTS)
HEX-063	B	0.79	0.34	0.20	94.70
HEX-084	B	1.05	0.46	0.26	126.48
HEX-105	B	1.32	0.57	0.33	158.38
*Ideal Wattage					

Operating Characteristics (Typical @5700K CCT)					
LIGHT ENGINE	DRIVE	LUMENS (T5)	INPUT POWER (WATTS)	LUMENS PER WATT	REPLACES
HEX-063	B	13,293	94.70	140.37	200-400W
HEX-084	B	17,723	126.48	140.13	300-525W
HEX-105	B	22,154	158.38	139.88	400-650W

**Manufacturing**  
 Manufactured in beautiful Harbor City, CA. ARRA Compliant. NAFTA Compliant. Test and burn-in of 100% of all luminaires before shipment. No less than 8-years experience in manufacturing LED-based products.

**Note**  
 Specifications subject to change without notice. Actual performance may differ as a result of end-user environment application. Actual wattage may differ by +/- 8%.

WHEN APPROVED, THE SPECIFICATIONS OUTLINED IN THIS SPEC SHEET SHALL BECOME THE SPECIFICATION FOR THE MATERIAL TO BE DELIVERED BY NORIBACHI ON THE CITED PROJECT. AN AMENDED SPEC SHEET CAN BE PROVIDED BUT ONLY AFTER WRITTEN APPROVAL BY THE CUSTOMER IS RECEIVED. THIS DOCUMENT IS THE PROPERTY OF NORIBACHI AND CAN ONLY BE USED IN CONNECTION WITH MATERIALS FURNISHED BY NORIBACHI. ©2015



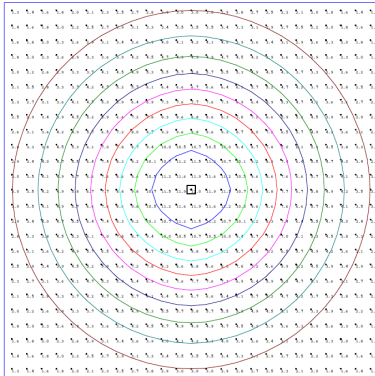
**HIGHBAY.DM**  
 All products feature Noribachi's exclusive Bespoke Engineered and Specifically Tailored (BEST) manufacturing methodology.

CATALOG #:	TYPE:
PROJECT:	
COMMENTS:	DATE:
PREPARED BY:	

**PERFORMANCE / DISTRIBUTION**

Power And Lumens By Light Engine							
DISTRIBUTION							
LIGHT ENGINE	DRIVE	CCT	T1 (LUMENS)	T2 (LUMENS)	T3 (LUMENS)	T4 (LUMENS)	T5 (LUMENS)
HEX-063	B	5700	N/A	N/A	N/A	N/A	13293
HEX-084	B	5700	N/A	N/A	N/A	N/A	17724
HEX-105	B	5700	N/A	N/A	N/A	N/A	22155

**Type Distribution  
 HEX-105**



**Distribution**

- 120° Standard Beam Spread.
- 80° Optional Beam Spread Available.
- Other Light Engine Type Distribution available upon request.

- IES Type Distributions are generated in an open space.
- Light Distribution images are mounted at 10 feet.

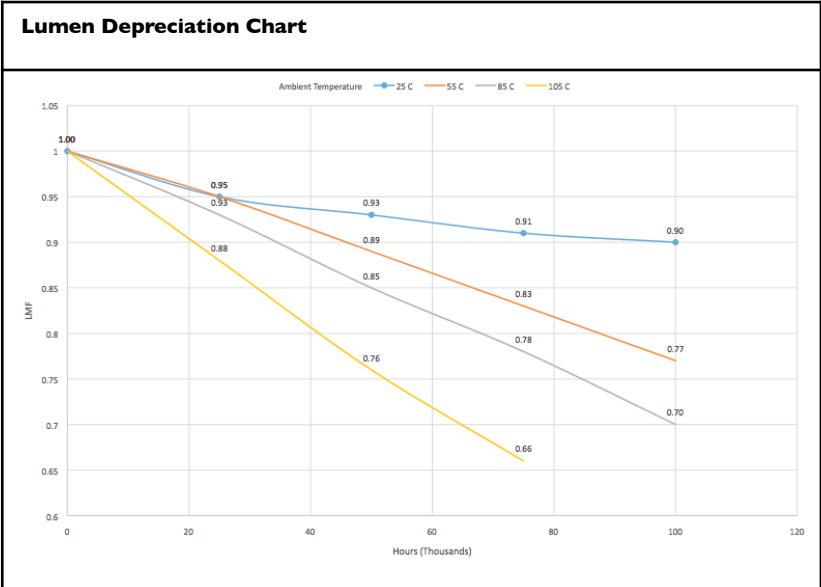
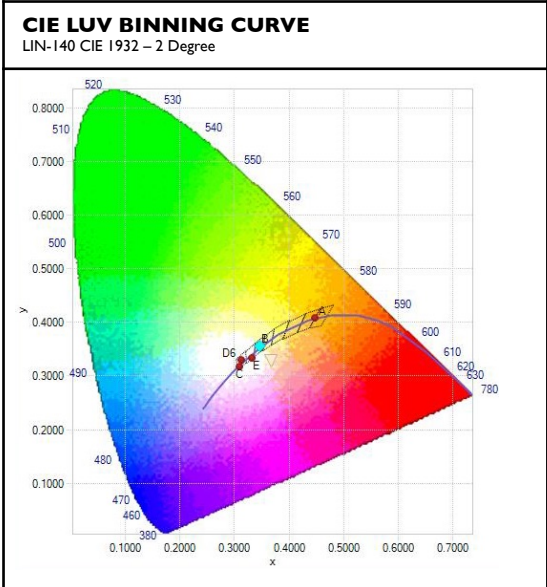
WHEN APPROVED, THE SPECIFICATIONS OUTLINED IN THIS SPEC SHEET SHALL BECOME THE SPECIFICATION FOR THE MATERIAL TO BE DELIVERED BY NORIBACHI ON THE CITED PROJECT. AN AMENDED SPEC SHEET CAN BE PROVIDED BUT ONLY AFTER WRITTEN APPROVAL BY THE CUSTOMER IS RECEIVED. THIS DOCUMENT IS THE PROPERTY OF NORIBACHI AND CAN ONLY BE USED IN CONNECTION WITH MATERIALS FURNISHED BY NORIBACHI. ©2015



**HIGHBAY.DM**  
 All products feature Noribachi's exclusive Bespoke Engineered and Specifically Tailored (BEST) manufacturing methodology.

CATALOG #:	TYPE:
PROJECT:	
COMMENTS:	DATE:
PREPARED BY:	

**PERFORMANCE / DISTRIBUTION**



**Lumen Maintenance Factors (B Drive)**

AMBIENT	INITIAL LMF	25K HR PROJECTED LMF	50K HR PROJECTED LMF	75K HR PROJECTED LMF	100K HR PROJECTED LMF
25°C	1.00	0.95	0.93	0.91	0.90
55°C	1.00	0.95	0.89	0.83	0.77
85°C	1.00	0.93	0.85	0.78	0.70
105°C	1.00	0.88	0.76	0.66	n/a

Each temperature has an independent initial value. In accordance with IESNA TM021011, Projected Values represent interpolated value based on time durations that are within six times (6X) the IESNA LM-80-08 total test duration (in hours) for the device under testing (DUT) i.e. the packaged LED chip). In accordance with IESNA TM-21-11, Calculated Values represent time durations that exceed six times (6X) the IESNA LM-80-08 total test duration (in hours) for the device under testing (DUT) i.e. the packaged LED chip)

**Lumen Multiplier**

AMBIENT TEMPERATURE	LUMEN MULTIPLIER
10°C	1.032
15°C	1.021
25°C	1.000
40°C	0.968
50°C	0.946

WHEN APPROVED, THE SPECIFICATIONS OUTLINED IN THIS SPEC SHEET SHALL BECOME THE SPECIFICATION FOR THE MATERIAL TO BE DELIVERED BY NORIBACHI ON THE CITED PROJECT. AN AMENDED SPEC SHEET CAN BE PROVIDED BUT ONLY AFTER WRITTEN APPROVAL BY THE CUSTOMER IS RECEIVED. THIS DOCUMENT IS THE PROPERTY OF NORIBACHI AND CAN ONLY BE USED IN CONNECTION WITH MATERIALS FURNISHED BY NORIBACHI. ©2015



**HIGHBAY.DM**  
 All products feature Noribachi's exclusive Bespoke Engineered and Specifically Tailored (BEST) manufacturing methodology.

CATALOG #:	TYPE:
PROJECT:	
COMMENTS:	DATE:
PREPARED BY:	

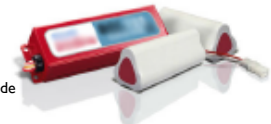
**OPTIONAL UPGRADES**

For additional optional upgrades, please contact your Noribachi Account Manager.

**EMERGENCY BATTERY BACKUP**  
**ORDER CODE: EM**  
 Appearance And Specifications:  
 •Rain Tight For Outdoor Use  
 •5W, 600 Lumens, 90 Minutes  
 •Must provide exact voltage requirements in order code



**EMERGENCY BATTERY BACKUP COLD**  
**ORDER CODE: EMC**  
 Appearance And Specifications:  
 •23V, 2000 Lumens, 90 Minutes  
 •Must provide exact voltage requirements on order code



**DIMMING**  
**ORDER CODE: 010V**  
**ORDER CODE: STEP**  
**ORDER CODE: BLD**  
 Appearance And Specifications:  
 •010V = 1 – 10V Dimming Functionality  
 •STEP = Step Dimming Functionality  
 •BLD = Bi-Level Dimming Functionality  
 \*Compatibility not guaranteed for any particular dimmable light in any particular installation.



**SURGE PROTECTOR**  
**ORDER CODE: SGR1**  
**ORDER CODE: SGR2**  
 Appearance And Specifications:  
 •100V - 120V Surge Protector  
 •480V Surge Protector



**LENS**  
**ORDER CODE: LENS**  
 Appearance And Specifications:  
 •Flat glass



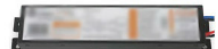
**DAYLIGHT HARVEST SENSOR**  
**ORDER CODE: DHS**  
 Appearance And Specifications:  
 •Enables daylight regulations and dimming when no presence is detected  
 •Delay time between 1 and 30 minutes



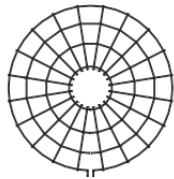
**480V FOR UP TO 150W LIGHT ENGINES**  
**ORDER CODE: HV1**



**480V FOR GREATER THAN 150W LIGHT ENGINES**  
**ORDER CODE: HV2**



**WIRE GUARD**  
**ORDER CODE: WG**  
 Appearance And Specifications:  
 •Steel



**ALUMINUM DOME OPTION**  
**ORDER CODE: ALUM**  
 Appearance And Specifications:  
 •Aluminum



WHEN APPROVED, THE SPECIFICATIONS OUTLINED IN THIS SPEC SHEET SHALL BECOME THE SPECIFICATION FOR THE MATERIAL TO BE DELIVERED BY NORIBACHI ON THE CITED PROJECT. AN AMENDED SPEC SHEET CAN BE PROVIDED BUT ONLY AFTER WRITTEN APPROVAL BY THE CUSTOMER IS RECEIVED. THIS DOCUMENT IS THE PROPERTY OF NORIBACHI AND CAN ONLY BE USED IN CONNECTION WITH MATERIALS FURNISHED BY NORIBACHI. ©2015



**HIGHBAY.DM**  
 All products feature Noribachi's exclusive Bespoke Engineered and Specifically Tailored (BEST) manufacturing methodology.

CATALOG #:	TYPE:
PROJECT:	
COMMENTS:	DATE:
PREPARED BY:	

**OPTIONAL UPGRADES**

6' 16/3 STW CORD  
**ORDER CODE: CORD6**  
 Appearance And Specifications:  
 •Cords must be purchased with plugs  
 •Black jacket  
 •Water resistant  
 •\*Image for reference only



L515P 125V TWIST LOCK PLUG  
**ORDER CODE: L515**  
 Appearance And Specifications:  
 •125V  
 •NEMA L5-15P  
 •Nickel plated brass/blades contacts  
 •UL/CSA



L615P 250V TWIST LOCK PLUG  
**ORDER CODE: L615**  
 Appearance And Specifications:  
 •250V  
 •NEMA L6-15P  
 •Nickel plated brass/blades contact  
 •UL/CSA



L715P 277V TWIST LOCK PLUG  
**ORDER CODE: L715**  
 Appearance And Specifications:  
 •277V  
 •NEMA L7-15P  
 •Nickel plated brass/blades contacts  
 •UL/CSA



L720P 277V TWIST LOCK PLUG  
**ORDER CODE: L720**  
 Appearance And Specifications:  
 •277V  
 •NEMA L7-20P  
 •Nickel plated brass/blades contacts  
 •UL/CSA



L820P 480V TWIST LOCK PLUG  
**ORDER CODE: L820**  
 Appearance And Specifications:  
 •480V  
 •NEMA L8-20P  
 •Nickel plated brass/blades contacts  
 •UL/CSA



L830P 480V TWIST LOCK PLUG  
**ORDER CODE: L830**  
 Appearance And Specifications:  
 •480V  
 •NEMA L8-30P  
 •Nickel plated brass/blades contacts  
 •UL/CSA



OCCUPANCY SENSOR  
**ORDER CODE: OS**  
 Appearance And Specifications:  
 •Compact design  
 •Polycarbonate, flame retardant  
 •UV and impact resistant



WHEN APPROVED, THE SPECIFICATIONS OUTLINED IN THIS SPEC SHEET SHALL BECOME THE SPECIFICATION FOR THE MATERIAL TO BE DELIVERED BY NORIBACHI ON THE CITED PROJECT. AN AMENDED SPEC SHEET CAN BE PROVIDED BUT ONLY AFTER WRITTEN APPROVAL BY THE CUSTOMER IS RECEIVED. THIS DOCUMENT IS THE PROPERTY OF NORIBACHI AND CAN ONLY BE USED IN CONNECTION WITH MATERIALS FURNISHED BY NORIBACHI. ©2015



**HIGHBAY.DM**  
 All products feature Noribachi's exclusive Bespoke Engineered and Specifically Tailored (BEST) manufacturing methodology.

CATALOG #:	TYPE:
PROJECT:	
COMMENTS:	DATE:
PREPARED BY:	

**OPTIONAL UPGRADES**

CUSTOM FIXTURE COLOR  
**ORDER CODE: COL-[RAL]**  
 Appearance And Specifications:  
 •Choose a custom color for your fixture.  
 •RAL color code must be provided.



MARINE GRADE FIXTURE COATING  
**ORDER CODE: COAT**  
 Appearance And Specifications:  
 •Add a Marine Grade coating to your fixture.  
 •Coating appearance is green.



EPOXY COATING  
**ORDER CODE: EPOXY**  
 Appearance And Specifications:  
 •Add epoxy coating to your fixture.



WHEN APPROVED, THE SPECIFICATIONS OUTLINED IN THIS SPEC SHEET SHALL BECOME THE SPECIFICATION FOR THE MATERIAL TO BE DELIVERED BY NORIBACHI ON THE CITED PROJECT. AN AMENDED SPEC SHEET CAN BE PROVIDED BUT ONLY AFTER WRITTEN APPROVAL BY THE CUSTOMER IS RECEIVED. THIS DOCUMENT IS THE PROPERTY OF NORIBACHI AND CAN ONLY BE USED IN CONNECTION WITH MATERIALS FURNISHED BY NORIBACHI. ©2015

